

# LOGGING ON

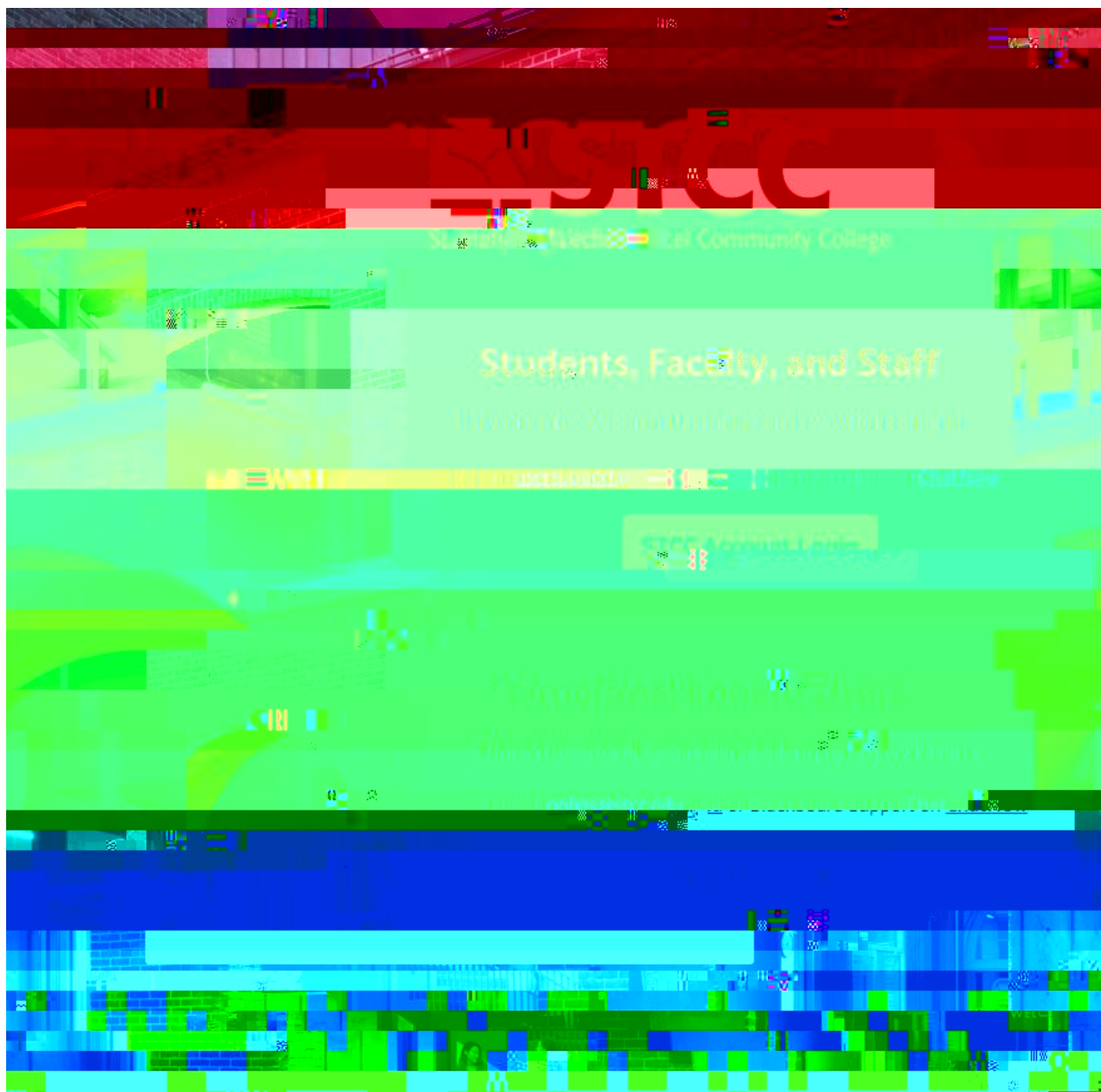
## SINGLE SIGNON

STCC uses Single Signon. Passwords are synchronized so you have fewer passwords to remember. Your STCC Account is your primary username and password to remember. This username and password is used for Blackboard, Zoom, Email, accessing computers, and STCCNet. When logging onto a computer you will be directed to the ADFS login screen.

Once you log into ADFS, you should not need the other passwords for the duration of your session.

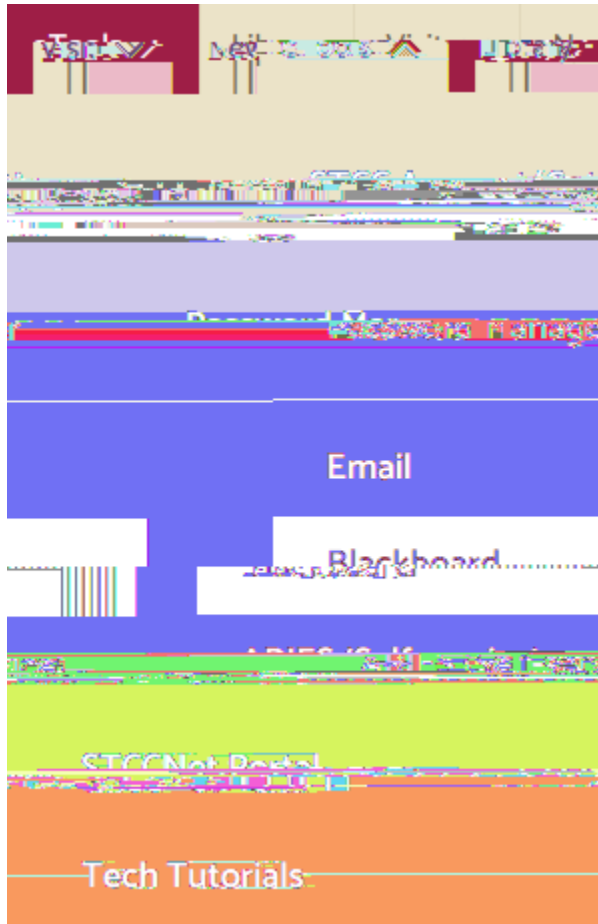
# BLACKBOARD

STCC's Blackboard has two methods to log in, the 'STCC Account Login' and 'Other User Login'. The recommended method is the 'STCC Account Login', this method uses your STCC Account username and password. The 'Other User Login' is for special cases like legacy faculty users with recent name changes that required a username change, external to STCC users. Please continue reading this document for further explanation.



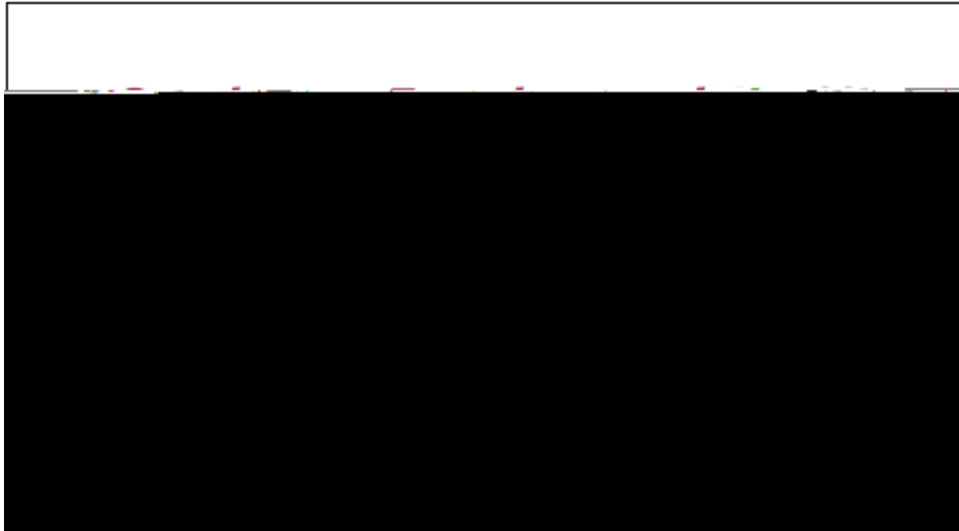
## Getting to the Blackboard Login Page

To get to the Blackboard login page, visit [stcc.edu/blackboardlogin](http://stcc.edu/blackboardlogin) or click the Blackboard link under "eTools" in the Top Navigation of this website, [www.stcc.edu](http://www.stcc.edu)



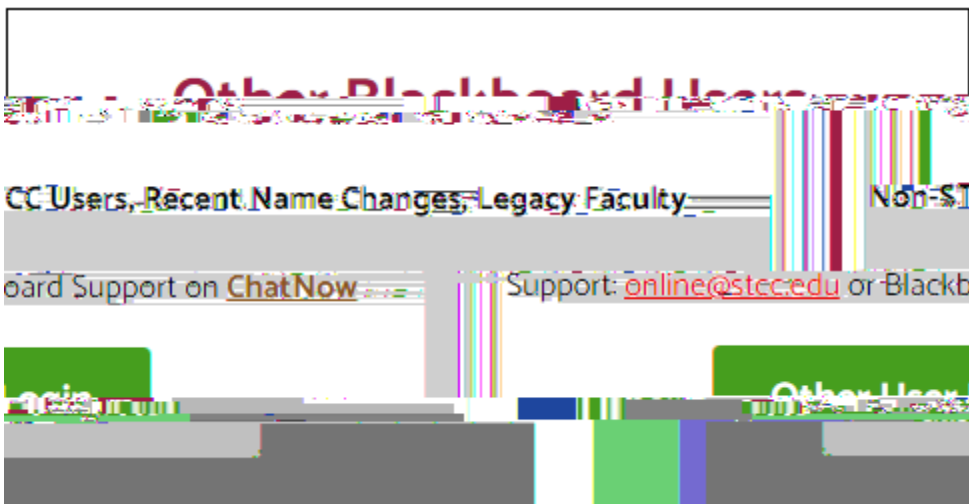
## STCC Account Login Method

The STCC Account login method is the primary way to login into Blackboard. This login method uses your STCC Account credentials (same as ARIES, STCCNet, STCC Gmail, etc.).



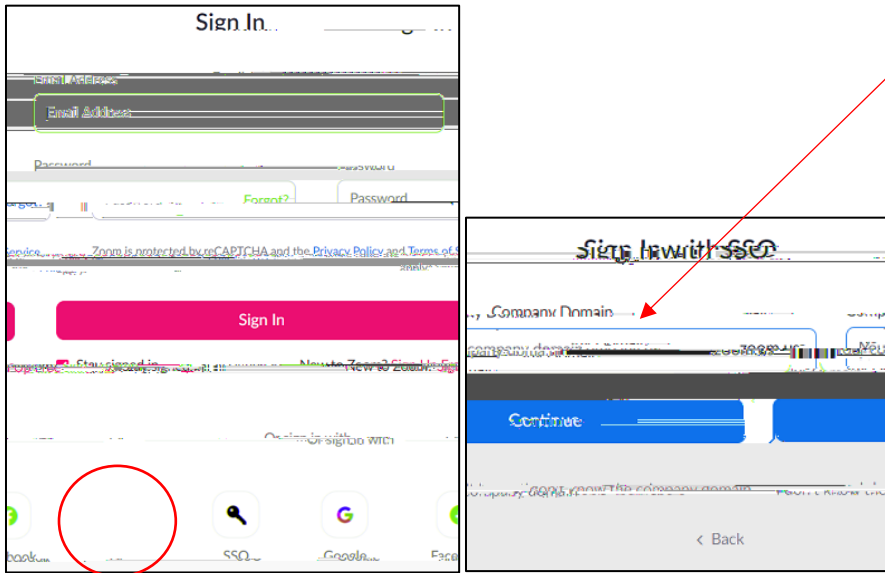
## Other User Login Method

This option is for users who cannot log in with the STCC Account Login, such as non-STCC users, recent name changes, and legacy faculty accounts.



# ZOOM

To log into Zoom skip the Email address and password and select SSO on type in "stcc.edu" in company domain field.



# ARIES

To log into ARIES go to stcc.edu, select Tools, then ARIES You will be redirected to the ADFS page. Enter your STCC Account username and password then Sign in.



# STCCNET

To log into the STCCNet Portal go to [stcc.edu](http://stcc.edu), select Tools, then STCCNet Portal. The ADFS dropdown screen appears. Enter your STCC Account username and password. Click Sign in.



# EMAIL

To log onto Email from Google Chrome, first log out of any other Gmail account you have open. Go to [Gmail](https://mail.google.com) (type in "mail.google.com" in the address bar).

At the Google Sign in type in your full Email address (including @student.stcc.edu) then select next.



If the pop up ADFS windows appear, enter your STCC Account Username and Password (not the email address). Click Sign in.

Sign in  
https://adfs.stcc.edu

Enter username or email address

Forgot your password?

Password

Sign in Sign out Cancel

You should be directed to your email.